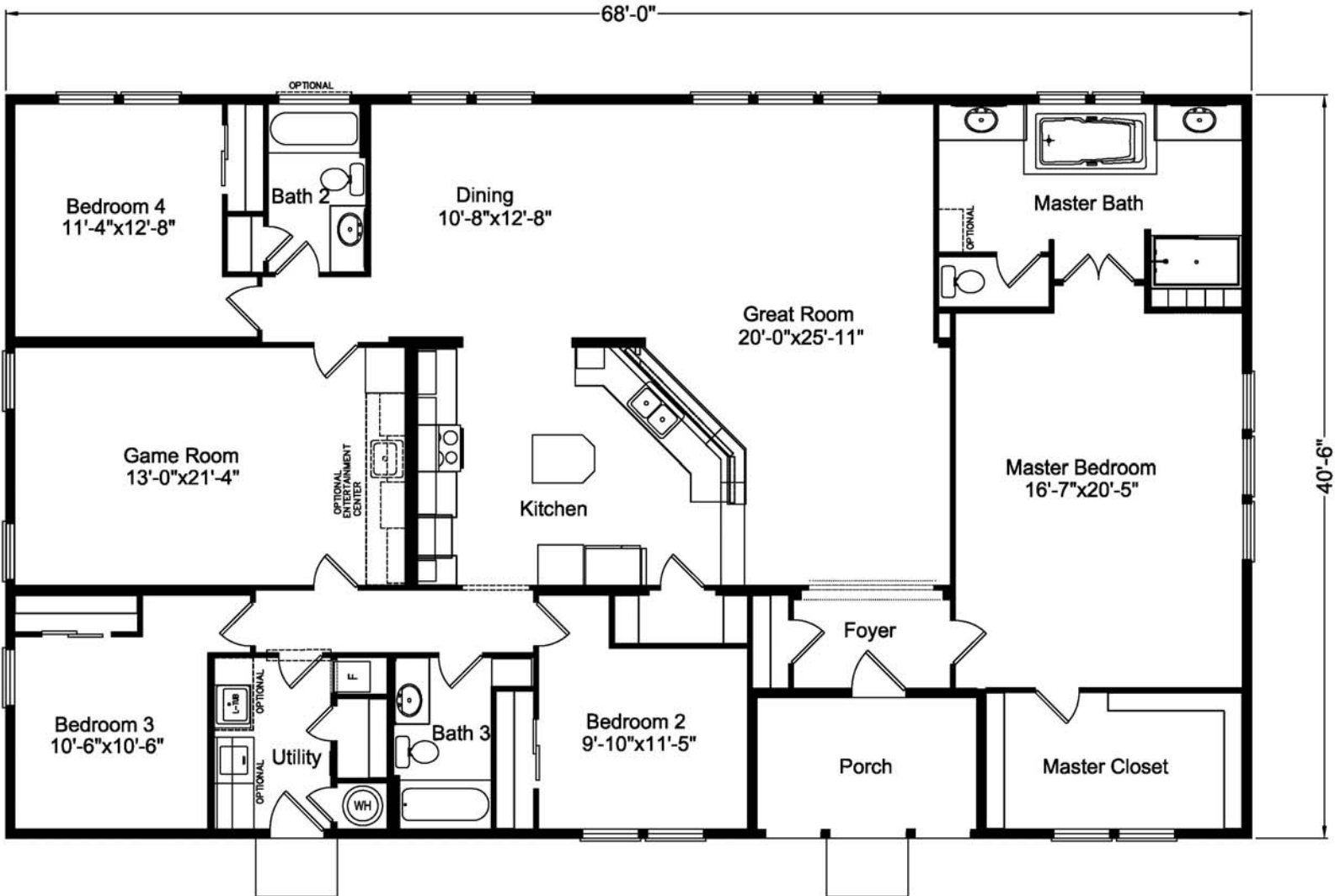




www.palmharbor.com



Timberridge Elite



Timberridge Elite

Model N5V468T5

5G42684A

Approx. 2662Sq. Ft.

- 4 bedrooms, 3 baths
- Foyer and great room
- Game room
- Walk-in master closet
- Walk-in pantry

Copyright © Palm Harbor Homes, Inc. Because Palm Harbor Homes has a continuous product updating and improvement process, prices, plans, dimensions, features, materials, specifications and availability are subject to change without notice or obligation. Please refer to working drawings for actual dimensions. Renderings and floor plans are artist's depictions only and may vary from the completed home. Square footage calculations and room dimensions are approximate subject to industry standards.

5000 Series Standard Features

Exterior		Kitchen/Appliance/Utility	
Item	Description	Item	Description
Siding	Allura Panel Fibercement Traditional Cedar 30YR	Kitchen Sink	8" Deep Stainless Steel Double Bowl
Siding Underlayment	House Wrap	Kitchen Faucet	Chateau Chrome Single Lever Moen
Trim	3.5" Allura Fibercement	Kitchen Sink Front	Tip-Out
Fascia	7.5" Allura Fibercement	Shut Off Valves	All Fixtures & Whole Home
Soffit	HardiSoffit Cedarmill	Range	Black Freestanding Electric
Roofing	Architectural Shingles	Range Ventilation	Black Broan Vertical Range Hood
Roofing Underlayment	Sythetic	Refrigerator	Black 18cf Top & Bottom Frost Free
Windows	Vinyl Frame Low-E Dual Glazed	Over Refrigerator	Cabinet
Front Door	36" Six-Panel	Water Heater	Rheem 40 Gal Electric
Rear Door	36" Six-Panel	Water Heater Access	Door
Exterior Floor Decking	Stained Wood- per print	Utility Plumbing	Plumb for Washer Single Lever Gate Valves
Hose Bib	Optional	Special Plumbing	Plumb for Icemaker
Dormer	Standard per plan	Gas Lines	N/A
Energy/Structural		Electrical	
Item	Description	Item	Description
Frame	Set Back I-Beam Chassis	Mainpanel	200 Amp Electrical Service
Axles	Recycled	Switches	Rocker Type
Floor Joist	2x8 16" OC	Light Bulbs	LED Bulbs Installed
Floor Decking	23/32 OSB Tongue & Groove	Entry Lights	Can Lights Front, Rear White Wall Mount Jelly Jar
Exterior Walls	2x6 16" OC / 90" Height	Closet Lights (Walk-in Size)	Recessed LED Can Light
Interior Walls	16" OC	Wall Light	(2) Sconce per plan
Roof Trusses	24" OC	Dining Room Lights	Rectangle Chandelier
Roof Pitch & Load	3/12 Pitch 30#	Morning Room Lights	Single Pendant light per plan
Eaves & Overhangs	12"	Kitchen Area Lights	(4) Recessed LED Can Lights
Ceiling	Vaulted w/ Flat Center	Kitchen Sink Light	Recessed LED Can Light
Insulation	R40-R21-R38 (Ceiling - Walls - Floor)	Island or Bar Lighting	(2) Pendant Lights over Island
Heating	EB-023F Electric Furnace	Utility & Hall Lights	2 Blub Metro
Duct System	Insulated Graduated Fiberglass	Bathroom Light	Bathroom Strip Lights Metro
Heat Registers	Perimeter With Toe-Kick Kitchen & Baths	Bedrooms Lights	Overhead Ceiling Light 2 Bulb Metro
Air Return	Ceiling Ducted	Fan (Wire)	Optional
Cross Overs	Flex Ducts	TV Jack (Plate & Conduit)	Optional
Ventilation	Bath Fans & Whole Home	Phone Jack (Plate & Conduit)	Optional
Air & Vapor Barrier	Sill Seal with Spray Vapor Barrier	Freezer (Wire)	Yes
Crawl Space	N/A	Dryer Hookup	Wire 220V
Attic Access	N/A	GFCI Recept	(1) Exterior per plan
		Safety	Smoke Detectors
Décor		Master Bath	
Item	Description	Item	Description
Window Coverings	Blind Valances Only	Tub / Shower	48" 1-Piece Fiberglass Shower With Door*
Blinds	2" Fauxwood Blinds Throughout	Tub / Shower Faucet	Single Control Anti-Scald Diverter
Carpet	Take Away	Tub	Oval Soaker
Pad	7#, 7/16" Thick Rebond Carpet Pad	Lavy	Dual China Sinks With Overflow
Vinyl Flooring	Baths	Lavy Faucet	Moen Dual Handle Lavy Faucets
Tile Flooring	Kitchen, Utility, Entry, & Morning Room	Toilet	Elongated Bowl
Laminate Flooring	Optional	Mirror	Trimmed Above Sink
Accent Paint	None	Hardware	Chrome Towel Bar & Tissue Holder
		Drawers	Bank of Three Drawers, per plan
Interior		Bath 2/ Bath 3	
Item	Description	Item	Description
Drywall Finish	Textured & Painted Prism White	Tub / Shower	60" 1-piece Fiberglass Tub/Shower Combo
Drywall Corners	Rounded Throughout Incl. Windows w/Wood Sill	Tub / Shower Faucet	Single Control Anti-Scald Diverter
Marriage Line Close-Up	Hidden Ridgebeam Tape & Textured	Lavy	China Sink With Overflow
Cabinets	Durabuilt With Adjustable Shelves	Lavy Faucet	Moen Dual Handle Lavy Faucet
Cabinet Doors	Alder Shaker w/Hardwood Faceframes	Toilet	Elongated Bowl
Cabinet Pulls	Satin Silver Knobs	Mirror	Trimmed Mirror Above Sink
Countertops	Wilsonart Laminate	Hardware	Chrome Towel Bar & Tissue Holder
Counter Edge	Crescent Laminate Edge		
Backsplash	Stacked Ceramic Tile	Other	
Interior Doors	White Raised Panel & Utility Door	*5G42684A - Mbath	60" Tile Shower w/Back Bench,72" soaker
Interior Door Hardware	Satin Silver Lever Handles	*5G42713P - Mbath	Spa shower , free standing tub
Door Trim	#356 2 1/4" White Door Casing	*5G42744A - Mbath	80" Tile Shower w/Handheld Wand, 72" soaker
Baseboards	#623 3 1/4" Baseboards T/O excluding closets	*5G42764L - Mbath	60" Tile Shower w/Back Bench,72" soaker
Ceiling Cove	N/A		
Closet Shelving	Wood With Dowel Rod	Build To	
		HUD INCLUDING 2014 AMMENDMENTS	
		Soaker Tub Faucet Includes Thermostatic Mixing Valve	
		2024 Energy Star version 2.0	

Revised Date: 4/1/24

Due to our continuous improvement process standards may change without notice.