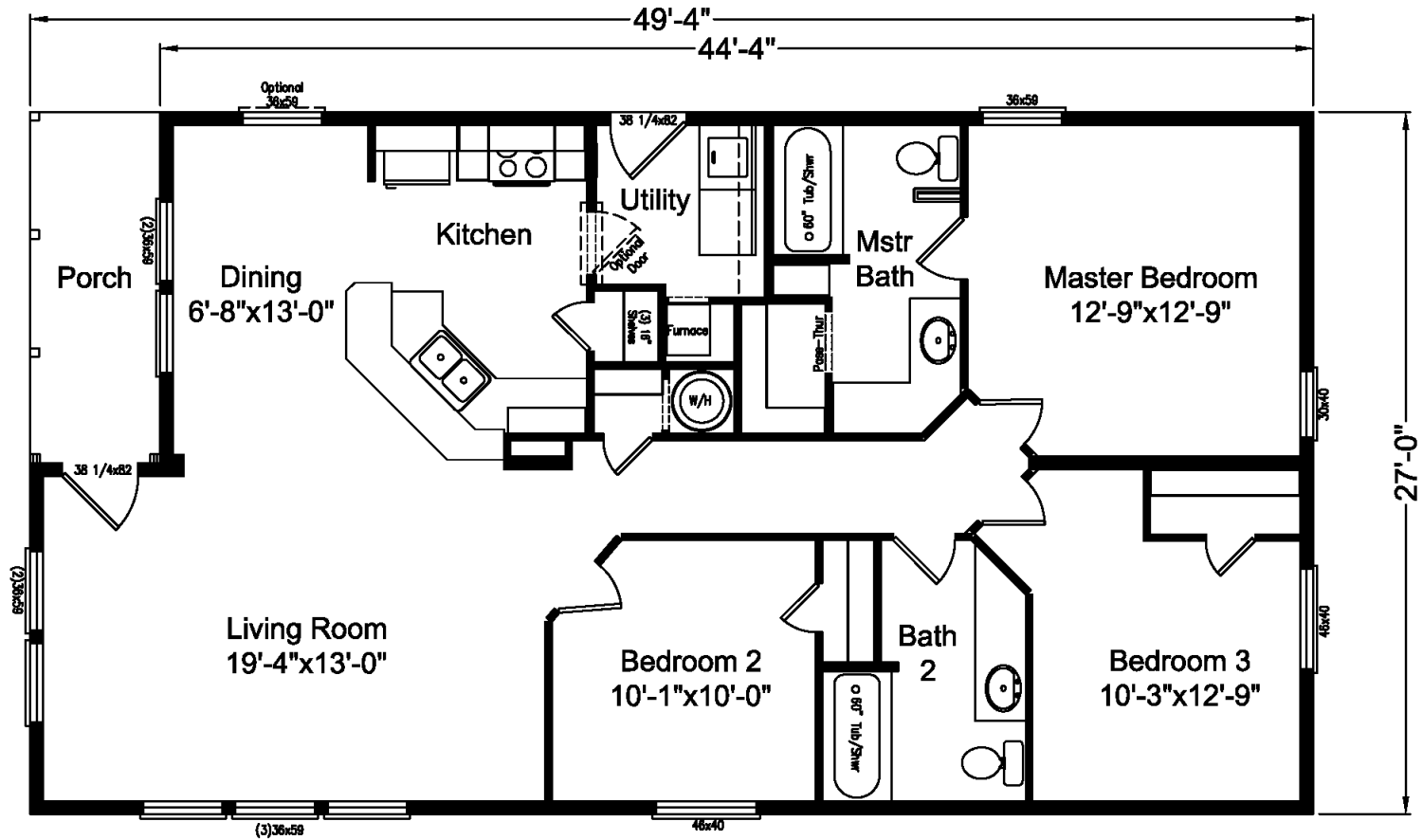




www.palmharbor.com



# Harbor View



## Harbor View

Model N4P349A7

4G28503B

Approx. 1236 Sq. Ft.

- 3 bedrooms, 2 baths
- Front porch
- Raised eating bar

Copyright © Palm Harbor Homes, Inc. Because Palm Harbor Homes has a continuous product updating and improvement process, prices, plans, dimensions, features, materials, specifications and availability are subject to change without notice or obligation. Please refer to working drawings for actual dimensions. Renderings and floor plans are artist's depictions only and may vary from the completed home. Square footage calculations and room dimensions are approximate subject to industry standards.

**400 Series Standard Features**

Exterior		Kitchen/Appliance/Utility	
Item	Description	Item	Description
Siding	Allura Panel Fibercement Traditional Cedar 30YR	Kitchen Sink	7" Deep Stainless Steel Double Bowl
Siding Underlayment	House Wrap	Kitchen Faucet	Chateau Chrome Single Lever Moen
Trim	3.5" Allura Fibercement	Kitchen Sink Front	Fixed Drawer Front
Fascia	7.5" Allura Fibercement	Shut Off Valves	All Fixtures & Whole Home
Soffit	HardiSoffit Cedarmill	Range	Black Freestanding Electric
Roofing	Architectural Shingles	Range Ventilation	Black Broan Vertical Range Hood
Roofing Underlayment	Sythetic	Refrigerator	Black 18cf Top & Bottom Frost Free Shelf
Windows	Vinyl Frame Low-E Dual Glazed	Over Refrigerator	Rheem 40 Gal Electric
Front Door	36" Six-Panel	Water Heater	Access Panel
Rear Door	36" Six-Panel	Water Heater Access	Plumb for Washer Single Lever Gate Valves
Exterior Floor Decking	Stained Wood- per print	Utility Plumbing	Plumb for Icemaker
Hose Bib	Optional	Special Plumbing	N/A
Dormer	Optional	Gas Lines	
Energy/Structural		Electrical	
Item	Description	Item	Description
Frame	I-Beam Chassis	Mainpanel	200 Amp Electrical Service
Axles	Recycled	Switches	Rocker Type
Floor Joist	2x6 16" OC or 2x8 16" OC on 14' or Wider Floors	Light Bulbs	LED Bulbs Installed
Floor Decking	19/32 OSB Tongue & Groove	Entry Lights	White Wall Mount Jelly Jar
Exterior Walls	2x6 16" OC / 90" Height	Closet Lights (Walk-in Size)	4" Recessed LED Can Light
Interior Walls	16" OC @ Marriage Line 24" OC All Others	Wall Light	Optional
Roof Trusses	24" OC	Dining Room Lights	Rectangle Chandelier
Roof Pitch & Load	3/12 Pitch 30#	Morning Room Lights	Single Pendant light per plan
Eaves & Overhangs	12"	Kitchen Area Lights	(4) 6" Recessed LED Can Lights
Ceiling	Vaulted	Kitchen Sink Light	6" Recessed LED Can Light
Insulation	R40-R21-R38 (Ceiling - Walls - Floor)	Island or Bar Lighting	(2) Pendants with Optional Island
Heating	EB-15F Electric Furnace*	Utility & Hall Lights	4" Recessed LED Can Light
Duct System	Insulated Graduated Fiberglass	Bathroom Light	Bathroom Strip Lights Metro
Heat Registers	In Line With Toe-Kick Kitchen & Baths	Bedrooms Lights	Overhead Ceiling Light 2 Bulb Metro
Air Return	Over Door	Fan (Wire)	Optional
Cross Overs	Flex Ducts	TV Jack (Plate & Conduit)	Optional
Ventilation	Baths & Whole Home	Phone Jack (Plate & Conduit)	Optional
Air & Vapor Barrier	Sill Seal with Spray Vapor Barrier	Freezer (Wire)	Optional
Crawl Space	N/A	Dryer Hookup	Wire 220V For Dryer
Attic Access	N/A	GFCI Recept	(1) Exterior per plan
		Safety	Smoke Detectors
Décor		Master Bath	
Item	Description	Item	Description
Window Coverings	White Window Cornices	Tub / Shower	60" 1-piece Fiberglass Tub/Shower Combo
Blinds	Metal Miniblinds Throughout	Tub / Shower Faucet	Single Control Anti-Scald Diverter
Carpet	Take Away	Tub	N/A
Pad	7#, 7/16" Thick Rebond Carpet Pad	Lavy	China Sink With Overflow
Vinyl Flooring	Kitchen, Utility, Entry & Baths	Lavy Faucet	Single Handle Lavy Faucet
Tile Flooring	Optional	Toilet	Elongated Bowl
Laminate Flooring	Optional	Mirror	Trimmed Above Sink
Accent Paint	Optional	Hardware	Chrome Towel Bar & Tissue Holder
Interior		Bath 2	
Item	Description	Item	Description
Drywall Finish	Textured & Painted Prism White	Tub / Shower	60" 1-piece Fiberglass Tub/Shower Combo
Drywall Corners	Square Including Windows w/Wood Sill	Tub / Shower Faucet	Single Control Anti-Scald Diverter
Marriage Line Close-Up	Hidden Ridgebeam Tape & Textured	Lavy	China Sink With Overflow
Cabinets	Durabuilt with Adjustable Shelves	Lavy Faucet	Single Handle Lavy Faucet
Cabinet Doors	Picture Frame Alkorcell	Toilet	Elongated Bowl
Cabinet Pulls	Optional	Mirror	Trimmed Above Sink
Countertops	Wilsonart Laminate	Hardware	Chrome Towel Bar & Tissue Holder
Counter Edge	Wilsonart Laminate	Other	Laminate Ledge Below Mirror
Backsplash	Stacked Ceramic Tile		
Interior Doors	White Raised Panel		
Interior Door Hardware	Satin Silver Tulip Knobs		
Door Trim	#356 2 1/4" White Door Casing		
Baseboards	#625 2 1/4" Baseboard Vinyl Areas Only		
Ceiling Cove	Optional Only With Tall Wall Upgrade		
Closet Shelving	Wood With Dowel Rod		
		Other	
		*Homes under 1,000 SQ Ft to use 10KW furnace	
		Build To	
		HUD INCLUDING 2014 AMMENDMENTS 2024 Energy Star version 2.0	