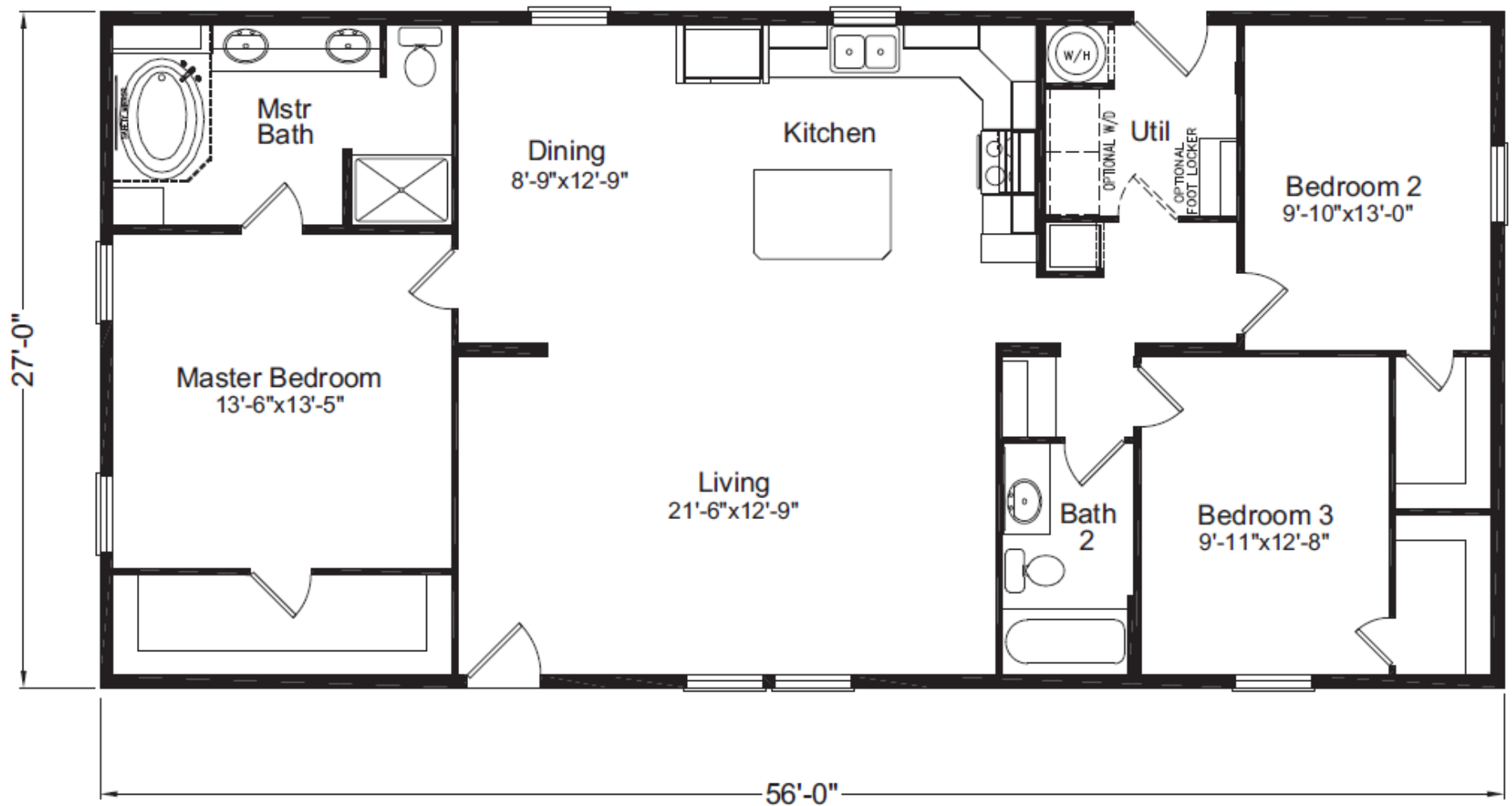




www.palmharbor.com



# American Dream III



## American Dream III

Model N4P356H9

AD28563C

Approx. 1512 Sq. Ft.

- 3 bedrooms, 2 baths
- Walk-in bedroom closets
- Utility room

Copyright © Palm Harbor Homes, Inc. Because Palm Harbor Homes has a continuous product updating and improvement process, prices, plans, dimensions, features, materials, specifications and availability are subject to change without notice or obligation. Please refer to working drawings for actual dimensions. Renderings and floor plans are artist's depictions only and may vary from the completed home. Square footage calculations and room dimensions are approximate subject to industry standards.

Rev. 07/15

**American Dream Standard Features**

| Exterior               |  | Kitchen/Appliance/Utility                           |  |
|------------------------|--|---|--|
| Item                   | Description  | Item  | Description                                    |
| Siding                 | Allura Panel Fibercement- Lap & Board Batt FDS     | Kitchen Sink  | 7" Deep Stainless Steel Double Bowl            |
| Siding Underlayment    | House Wrap   | Kitchen Faucet                                      | Chateau Chrome Single Lever Moen               |
| Trim                   | 3.5" Allura Fibercement                            | Kitchen Sink Front                                  | Fixed Drawer Front                             |
| Fascia                 | 7.5" Allura Fibercement                            | Shut Off Valves                                     | All Fixtures & Whole Home                      |
| Soffit                 | HardiSoffit Cedarmill                              | Range   | Black Freestanding Electric                    |
| Roofing                | Architectural Shingles                             | Range Ventilation                                   | Black Broan Vertical Range Hood                |
| Roofing Underlayment   | Sythetic   | Refrigerator  | Black 18cf Top & Bottom Frost Free             |
| Windows                | Vinly Frame Low-E Dual Glazed; 80" in LR           | Over Refrigerator                                   | Shelf & Surround                               |
| Front Door             | 36" Six-Panel with Horizon above                   | Water Heater  | Rheem 40 Gal Electric                          |
| Rear Door              | 36" Six-Panel                                      | Water Heater Access                                 | Access Storage Shelves                         |
| Exterior Floor Decking | Stained Wood- per print                            | Utility Plumbing                                    | Plumb for Washer Single Lever Gate Valves      |
| Hose Bib               | Optional   | Special Plumbing                                    | Plumb for Icemaker                             |
| Dormer                 | Standard per plan                                  | Gas Lines   | N/A  |
| Energy/Structural      |  | Electrical  |  |
| Item                   | Description  | Item  | Description                                    |
| Frame                  | I-Beam Chassis                                     | Mainpanel   | 200 Amp Electrical Service                     |
| Axles                  | Recycled Tires                                     | Switches  | Rocker Type                                    |
| Floor Joist            | 2x6 16" OC or 2x8 16" OC on 14' or Wider Floors    | Light Bulbs   | LED Bulbs Installed                            |
| Floor Decking          | 19/32 OSB Tongue & Groove                          | Entry Lights  | White Wall Mount Jelly Jar                     |
| Exterior Walls         | 2x6 16" OC / 102" High Flat Ceiling                | Closet Lights (Walk-in Size)                        | 4" Recessed LED Can Light                      |
| Interior Walls         | 16" OC @ Marriage Line 24" OC All Others           | Wall Light  | Optional                                       |
| Roof Trusses           | 24" OC   | Dining Room Lights                                  | Rectangle Chandelier                           |
| Roof Pitch & Load      | 3/12 Pitch 30# Tall Flat Ceiling                   | Morning Room Lights                                 | Single Pendant light per plan                  |
| Eaves & Overhangs      | 12" 27 Wide Plans, 10" 30 Wide Plans               | Kitchen Area Lights                                 | (4) 6" Recessed LED Can Lights                 |
| Ceiling                | Flat   | Kitchen Sink Light                                  | 6" Recessed LED Can Light                      |
| Insulation             | R40-R21-R38 (Ceiling - Walls - Floor)              | Island or Bar Lighting                              | (2) Pendants Over Island Per Plan              |
| Heating                | EB-15F Electric Furnace*                           | Utility & Hall Lights                               | 4" Recessed LED Can Light                      |
| Duct System            | Insulated Graduated Fiberglass                     | Bathroom Light                                      | Bathroom Lights Per Plan                       |
| Heat Registers         | In Line  | Bedrooms Lights                                     | Overhead Ceiling Light 2 Bulb Metro            |
| Air Return             | Over Door  | Fan (Wire)  | Optional                                       |
| Cross Overs            | Flex Ducts   | TV Jack (Plate & Conduit)                           | Optional                                       |
| Ventilation            | Baths & Whole Home                                 | Phone Jack (Plate & Conduit)                        | Optional                                       |
| Air & Vapor Barrier    | Sill Seal with Spray Vapor Barrier                 | Freezer (Wire)                                      | Optional                                       |
| Crawl Space            | N/A  | Dryer Hookup  | Wire 220V                                      |
| Attic Access           | N/A  | GFCI Recept   | (1) Exterior per plan                          |
|                        |  | Safety  | Smoke Detectors                                |
| Décor                  |  | Master Bath   |  |
| Item                   | Description  | Item  | Description                                    |
| Window Coverings       | Plant Built Wood Valances                          | Tub / Shower  | 48" 1-piece Shower With Door (N/A 48' Plans)   |
| Blinds                 | Metal Miniblinds Throughout                        | Tub / Shower Faucet                                 | Single Control Anti-Scald Diverter             |
| Carpet                 | Take Away  | Tub   | Leisure w/Mirror Above (N/A on 48' Plans)      |
| Pad                    | 7#, 7/16" Thick Rebond Carpet Pad                  | Lavy  | China Sink With Overflow (2ea 56' & 66' Plans) |
| Vinyl Flooring         | Kitchen, Utility, Dining, Morning*, Entry & Baths  | Lavy Faucet   | Single Handle Lavy Faucets                     |
| Tile Flooring          | Optional   | Toilet  | Elongated Bowl                                 |
| Laminate Flooring      | Optional   | Mirror  | Trimmed Mirror Above Sink                      |
| Accent Paint           | None   | Hardware  | Chrome Towel Bar & Tissue Holder               |
|                        |  | Cabinet   | Bank of Drawers                                |
| Interior               |  | Bath 2  |  |
| Item                   | Description  | Item  | Description                                    |
| Drywall Finish         | Textured & Painted Prism White                     | Tub / Shower  | 60" 1-piece Fiberglass Tub/Shower Combo        |
| Drywall Corners        | Square Including Windows w/Wood Sill               | Tub / Shower Faucet                                 | Single Control Anti-Scald Diverter             |
| Marriage Line Close-Up | Textured Beam Close-Up                             | Lavy  | China Sink With Overflow                       |
| Cabinets               | Durabilt 42" With Adj. Shelves & Shadow Box        | Lavy Faucet   | Single Handle Lavy Faucet                      |
| Cabinet Doors          | Picture Frame Alkorcell                            | Toilet  | Elongated Bowl                                 |
| Cabinet Pulls          | Satin Silver Knobs                                 | Mirror  | Trimmed Mirror Above Sink                      |
| Countertops            | Wilsonart Laminate, HD Island & Tub Base           | Hardware  | Chrome Towel Bar & Tissue Holder               |
| Counter Edge           | Wilsonart Laminate, Crescent Edge Island, Tub Base |   |  |
| Backsplash             | Stacked Ceramic Tile T/O, Accent Tile Behind Range |   |  |
| Interior Doors         | White Raised Panel                                 |   |  |
| Interior Door Hardware | Satin Silver Levers                                |   |  |
| Door Trim              | #356 2 1/4" White Door Casing                      |   |  |
| Baseboards             | #625 2 1/4" Baseboard Vinyl Areas Only             |   |  |
| Ceiling Cove           | Optional   |   |  |
| Closet Shelving        | Wood With Dowel Rod                                |   |  |
|                        |  | Other   |  |
|                        |  | *Homes under 1,000 SQ Ft to use 10KW furnace        |  |
|                        |  | American Dream Features                             | 12" Plant Built Valance T/O Except Living Room |
|                        |  |   | Living Room 8" Plant Built Valances            |
|                        |  |   | Accent Tile Behind Range Kitchen               |
|                        |  | Build To  |  |
|                        |  | HUD INCLUDING 2014 AMMENDMENTS                      |  |
|                        |  | *Master bath includes soffit w/can lights per plan* |  |
|                        |  | 2024 Estar Version 2.0                              |  |

\*Morning Room, Breakfast Room, Nook, or Eat In Kitchen Areas per print.

Revised Date:4/1/24

Due to our continuous improvement process standards may change without notice.