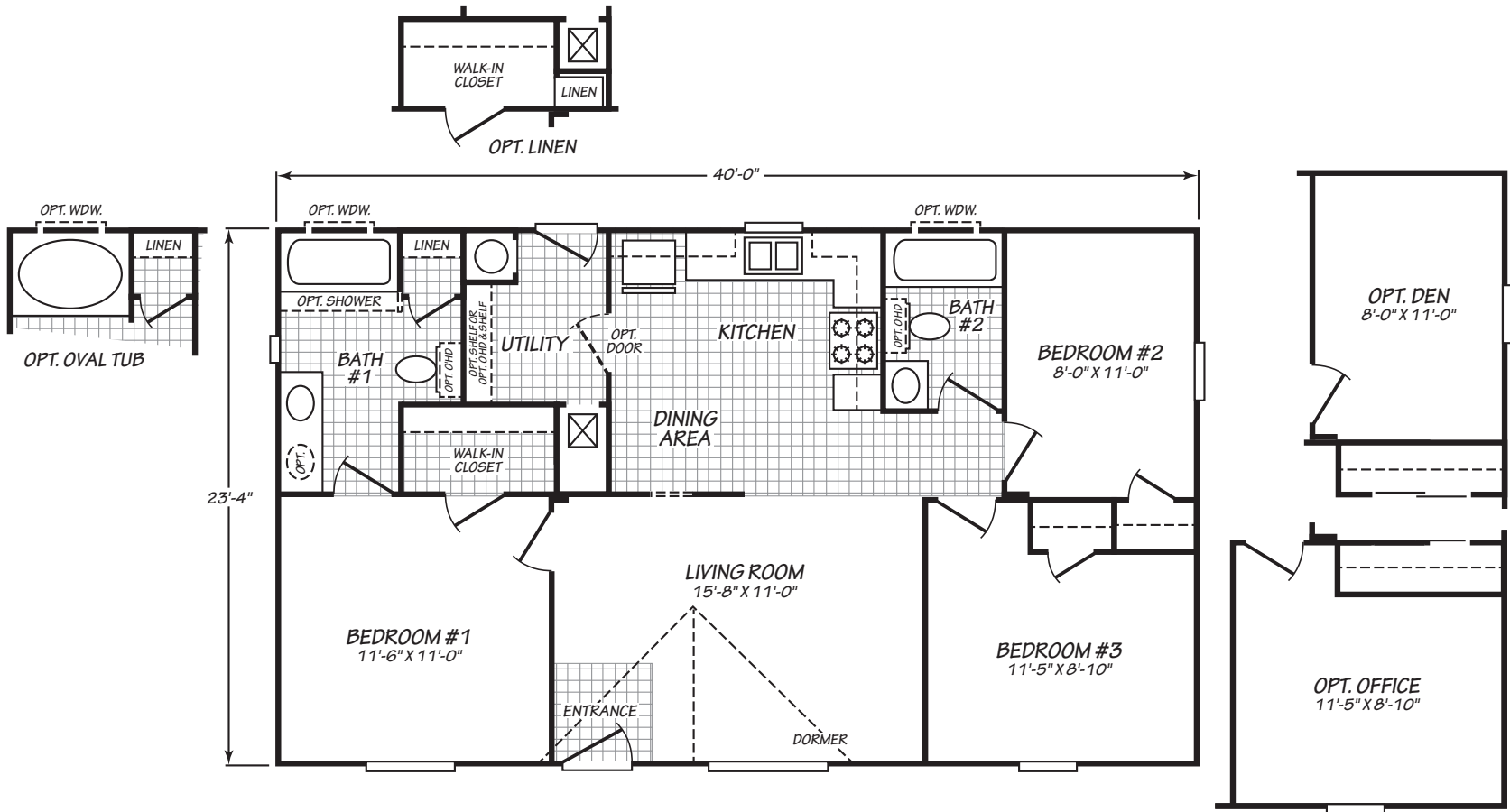


JUNIPER



MODEL 24403R

3 Bedroom • 2 Bath • 933 Square Feet

©2024 FLEETWOOD HOMES INC. ALL RIGHTS RESERVED

Important: Because we continually update and modify our products, it is important for you to know that our brochures and literature are for illustrative purposes only. **ILLUSTRATIONS MAY SHOW OPTIONAL FEATURES.** All information contained herein may vary from the actual home we build. Dimensions are nominal length and width measurements are from exterior wall to exterior wall. We reserve the right to make changes at any time, without notice or obligation, in prices, colors, materials, specifications, features and models. Please check with your retailer for specific information about the home you select.



10/2/2023	JUNIPER STANDARD FEATURES
GENERAL CONSTRUCTION	
Insulation: Ceilings/Walls/Floors NOTE: Adding or enlarging window(s) maybe require extra insulation.	R-40 Ceiling, R-21 Walls, R-33 Floors. Energy Star Standard
Window Type	Low-E vinyl windows with argon gas
Floor Joists	2 x 6 16" O.C.
Floor Decking	4' x 8' x 19/32" tongue and groove OSB
Exterior Siding Type	LP SmartSide Panel
Exterior Window Trim	4" Trim all sides
Dormers & Exterior Trim	Dormer is standard - see print for size and location. Specific sizes available only.
Sidewalls	2 X 6 at 16" OC / 90" at side walls, vaulted ceiling.
Shingles	Architectural with Limited Lifetime warranty.
Standard Roof Load	30 Pound w/Trusses 24" OC
Exterior Entry Doors	Front-36" Inswing with deadbolt knocker and peephole, Rear 32" Inswing with deadbolt
Eaves & Overhang	12" Sidewalls and end walls. Screens vented.
Roof Pitch	4/12
Set Back Frame (Foundation Ready)	Optional
FLOORING COVERING	
Carpet & Carpet Pad	Level 1 carpet & 3/8" rebond carpet pad
Linoleum	Kitchen, baths, entry and utility. Dining room is lino in some plans and carpet in others. Hall and closets vary per print.
Main Entry Floor Covering	Lino
INTERIOR	
Window Sills & Trim	White finished sills (not T/T) w/lip molding
Sheetrock Thickness	1/2" High Density (ceiling); 1/2" Standard (walls)
Closet Shelves	Wire shelves location per print.
Tape & Texture Interior Wall Finish	Standard w/square corners throughout.
Interior Wall Paint	Creamy throughout standard.
Ceiling Paint	Matches primary wall paint.
Interior Ceiling to Wall Transition	Caulked and painted.
Coffered Ceiling	N/A
Base Molding	3-1/4" in lino areas. Optional all other areas.
Interior Doors	White raised 2 panel.
Door Trim	2 1/4" Waterfall
Door Stops	None
Door Handles	Round brushed nickel
Wardrobe Doors	White raised 2 panel
LIGHTING/ELECTRICAL	
Bedroom Lighting	Recessed LED can light
Dining Room Lighting	Recessed LED can lights per print.
Kitchen Lighting	Recessed LED can lights per print.
Exterior Lights	White - both front and back doors.
Bathroom Lighting	Bath 1: recessed LED can lights. Guest: recessed LED can lights. Cosmetic lights are optional.
Wire & Brace For Ceiling Fan(s)	Optional
TV/Phone Boxes - Rough In With Raceways - Not Wired	Optional
Electrical Service Main Panel	200 AMP
CABINETS	
Cabinet Type	Knotty Alder raised panel doors. Knotty Alder face frame and side panels with hidden hinges. All cabinets all have light maple color lined interiors.
Kitchen Overhead Cabinets	30" tall with one adjustable shelf.

10/2/2023	JUNIPER STANDARD FEATURES
Cabinet Hardware	Brushed nickel knobs on cabinet doors and drawers.
Range Hood Overhead Cabinet	Standard
Refer Overhead	Overhead cabinet
Washer/Dryer Overhead	Optional
Kitchen Drawers	Three-Drawer bank, drawers over doors optional.
Cabinet Crown Molding	Yes
Bathroom Drawer Bank	Optional. Not all baths will have room for drawers.
Backsplash - Kitchen and Baths	4" Laminate
Bar Back Finish	Matches cabinet
Countertop Self Edge	Laminate
Bathroom Lavy Cabinet	Full door - no cubbies. Med cabinet optional.
PLUMBING/HVAC	
Bath 1 Tub/Shower	60" Fiberglass tub/shower with shower head.
Guest Bath Tub/Shower	60" fiberglass tub/shower
Bath Sinks & Toilets	China and elongated toilet
Bath Sink Faucets & Tub/Shower Faucets	Single lever brushed nickel on sinks, tub and/or shower.
Bathroom Mirrors	24" x 42" over sinks.
Towel Bar/Tissue Holders	Standard Both Baths
Kitchen Sink	8" deep stainless steel
Kitchen Faucet	Single Lever with pull-out side sprayer
Plumb for Washing Machine	Standard
Wire for Clothes Dryer	Standard
Shut-Off Valves	Individual standard. Whole House optional.
Exterior Water Faucet	Optional in pre-determined locations.
Heating System	Electric forced air furnace and ducts. Standard digital set back thermostat.
Water Heater	50 Gallon standard.
WINDOW TREATMENTS	
Mini Blinds	Optional
APPLIANCES	
Color	Stainless Steel
Refrigerator	18 Cubic Foot Frost Free. Plumb for ice/water optional.
Range	30" Electric range with window and clock.
Dishwasher	Optional
Microwave	Optional
Range Hood	30" Stainless Steel
Fireplace	Not Applicable
ADDITIONAL FEATURES	
Close up: T and T held back at walls for drywall colose up. Ceilings finished to marriage line and foam close up beam is shipped loose.	STD